

OfficeMaster 3 Quick Start Guide

OfficeMaster is Copyright © 2008 Ferrari electronic AG. All rights reserved. No part of this manual or the software may be copied, in any way, without written approval from Ferrari electronic AG. All trade marks mentioned in this manual are registered trade marks of the particular trade mark holder. Ferrari electronic AG retains the right to change this manual and the software, without prior notice, at any time.

The information contained in this manual has been gathered with the greatest care. However the possibility of incorrect details cannot be completely excluded. Ferrari electronic AG accepts no liability for any errors and their consequences. For notes and comments, please contact:

dokumentation@officemaster.de

Publisher: Ferrari electronic AG
Ruhlsdorfer Str. 138
14513 Teltow, near Berlin, Germany

Internet: www.ferrari-electronic.com

Phone number: +49 (3328) 455 90

Fax: +49 (3328) 455 960

E-Mail: info@ferrari-electronic.de

Authors: Johann Deutinger

Layout: Antje Binas

Printing date: May 2008

Quick Start Guide

Introduction

OfficeMaster Card/Gate is a family of hardware controllers to be combined with OfficeMaster Unified Messaging applications. It can also be used as a gateway to connect ISDN telephone exchanges with Office Communications Server 2007 and/or Microsoft Exchange Server 2007. When used in this way, the controllers function independently and therefore do not require an additional controlling computer. You can also implement a combination of these two operating methods if required.

OfficeMaster Card/Gate is connected to the telephone network through ISDN Basic Rate Interfaces (BRIs) or ISDN Primary Rate Interfaces (PRIs).

This Quick Start Guide describes how to setup OfficeMaster Gate for use with Microsoft Office Communications Server 2007 (called „OCS“ in the following text). For more details on configuration and usage in complex installations please consult the *OfficeMaster Hardware* manual available through download from <http://www.ferrari-electronic.com>.

Prerequisites

To use OfficeMaster Gate for Office Communications Server 2007, the following requirements must be met:

- OfficeMaster Gate (1 BRI, 4 BRI, 1 PRI or 2 PRI version) with corresponding ISDN connection to PBX or (preferably DID-) trunk
- Windows PC for configuration program
- OCS Standard or Enterprise edition with separate Mediation Server

Mediation Server Configuration

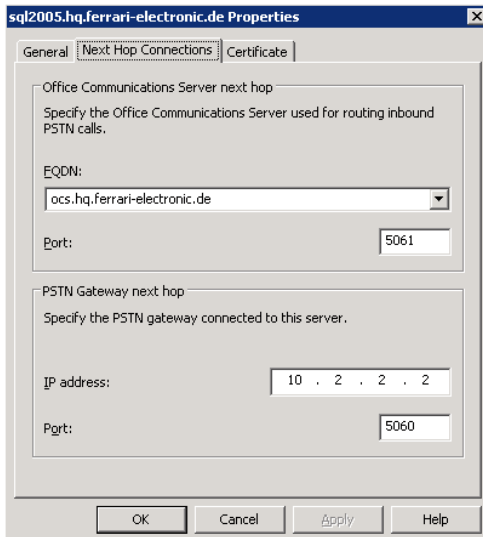
More details can be found in OCS_VoIP_Guide.doc available from Microsoft Corp.

For each installed OfficeMaster Gate at least one corresponding Mediation Server must be available (future versions of OCS may support more than one gateway per Mediation Server). The Mediation Server must have two IP Addresses:

- *Communications Server listening IP address* and
- *Gateway listening IP address*.

Microsoft recommends to use two separate network adapters for these endpoints. A physical PC must be used for the Mediation Server since virtual machines do not have reliable timing needed for high quality VoIP communications.

To configure the Mediation Server connection to OfficeMaster Gate the Office Communications Server 2007 Administrative Tool must be started. In the Mediation Servers node right click the Mediation Server to be configured, click *Properties* and then *General*. This will show the following dialog:



► *PSTN Gateway next hop*

In the *PSTN Gateway next hop* group enter the IP address of OfficeMaster Gate and Port 5060 as shown.

After making any configuration changes in this dialog the Mediation Server service must be restarted.

OfficeMaster Gate Configuration

Initial setup and configuration of OfficeMaster Gate is done through a utility which can be run on any Windows client or server PC. The program (*Setup-OfficeMaster-Gate-Config.exe*) can be found on the CD included with OfficeMaster Gate or alternatively be downloaded from <http://www.ferrari-electronic.com>.

The steps needed to setup OfficeMaster Gate for use with OCS are:

■ *Configure network settings:*

- click *Search* to look for OfficeMaster Gate in your network,
- select the appropriate entry (each name includes the serial number) and login after entering the password (default: „omc“).
- Click on *Change IP Address...* and fill in the required information.

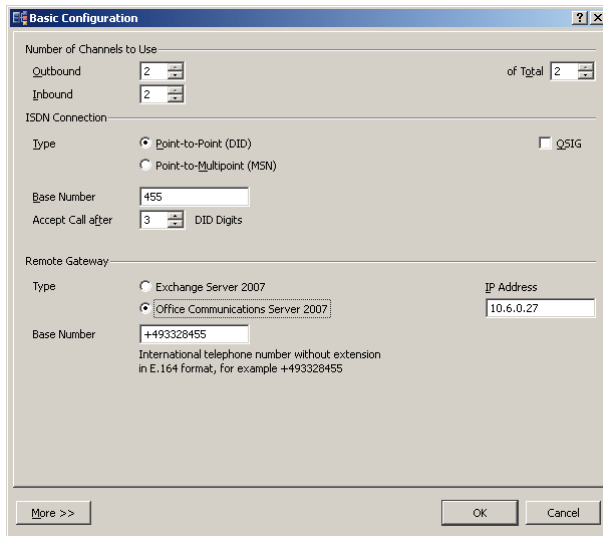
■ *Activate Gateway function:*

- selecting *Edit > Operation Mode > Gateway/mixed*
- select *Edit > Configuration Mode > Basic*.

This allows for quick setup of typical configurations. In more complex environments (e.g. with additional support of T.38 fax reception or combined use of OCS/Exchange and OfficeMaster Unified Messaging suite) Advanced Configuration mode must be used. See the *OfficeMaster Hardware* manual for more information about advanced configuration.

■ *Configure OfficeMaster Gate for use with OCS:*

To configure OfficeMaster Gate for use with OCS click on *Change Settings...* to activate the Basic Configuration Dialog.



► **Number of Channels to Use**

Number of Channels to Use defines how many parallel lines are available and how many of them should be used for inbound and outbound calls.

► **ISDN Connection**

In *ISDN Connection* the type of ISDN protocol (DID or MSN) must be selected. If a DID trunk is used the Base Number may be signalled from the network side; in that case it must be entered in the corresponding edit field. The number of expected DID digits must be defined as well.

► **Remote Gateway**

In the *Remote Gateway* section the radio button *Office Communications Server 2007* must be selected. The IP Address of the Mediation Server's Gateway listening IP address must be entered next. After entering the E.164 number (beginning with „+“, then country code, area code and subscriber number without extensions) OfficeMaster Gate should be restarted through File > Reboot. After rebooting OfficeMaster Gate is ready for use with OCS.

Troubleshooting

If something is not working as expected OfficeMaster Gate can collect debug log messages for later analysis. These messages are sent using the syslog protocol. By default the Gateway Configuration Program installs a syslog server on the same PC. Any other syslog server available in the local network can be used as well.

By Clicking on **Edit > Debug Level** the IP Address of the available syslog server must be defined. In addition the logging details for different areas should be set here. To troubleshoot common problems it is recommended to use the following settings:

On the CallProc Tab		On the ISDN Tab		Everything else
ISDN	1	Layer 2	1	0
SIP	1	all others	0	
SIP ISDN	1			
JclISDN	1			
all others	0			